

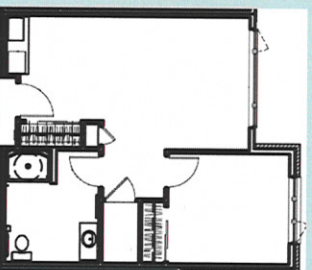


Client Services

Housekeeping
Laundry
Garbage pickup
On Site Recreation Activities
Rotational Menu
Holiday Celebrations
Hespellers Cookhouse & Tavern
Hairdresser
Medical Clinic
Dentist
Mail boxes
Community Gardens

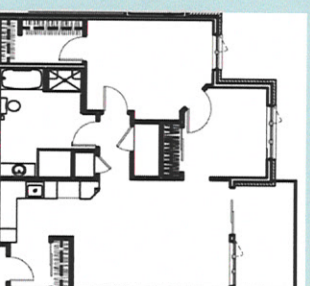
Small Suite

- 526 sq. feet
- Kitchenette with small fridge and microwave
- dining area
- Large picture window in the living room
- Wheelchair accessible suite and bathroom
- Bathroom has a walk in shower
- Large bedroom with closet



Large Suite

- 807 sq. feet
- Full kitchen with stove, fridge, microwave, dining area
- Wheelchair accessible suite and washroom
- Washroom has tub and walk in shower. Large storage closet inside bathroom
- Bedroom has large walk in closet
- Small den, typically used as officespace
- Patio or balcony



What is Assisted Living?

Assisted Living residences provide housing and a range of support services for seniors and persons with disabilities who have difficulty living independently and require assistance with the challenge of day-to-day activities.

Typically individuals or couples interested in Assisted Living will already be receiving home care services provided by either the Regional Health Authority (RHA) or by family members.

It is recommended that interested applicants contact the Home Care Coordinator located within in the Primary Health Care Centre at the Niverville Heritage Centre to arrange for an assessment. The assessment will ensure enough care will be provided for the individual.

For more information
contact us:

204-388-5000 ext 207
manorcsm@heritagecentre.ca

www.heritagecentre.ca

Niverville Heritage Centre
100-111 | 2nd Avenue South
Niverville, MB | R0A 0A1



Assisted Living and Supportive Care Residence

Located at the
Niverville Heritage Centre
A Gathering Place for the Entire Community

